

PART OF N.W. 1/4 OF SEC. 16, T.5 N., R.1 W., S.L.B. & M.  
PART OF LOTS 59, 60 & 61, AMENDED PLAT OF BEN LOMOND HEIGHTS

31

# KAMMEYER ADDITION

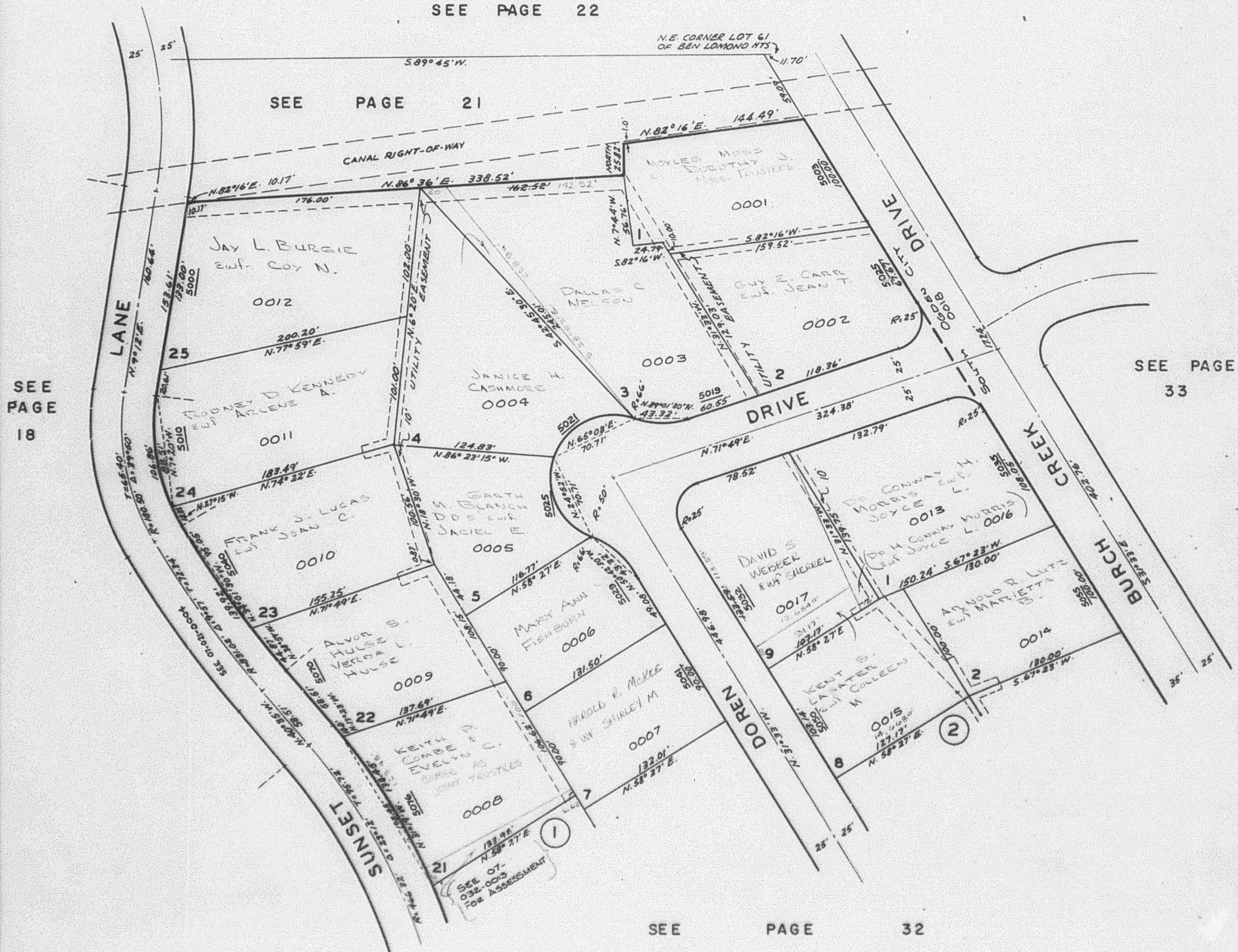
PART OF BLOCKS 1 & 2  
IN SOUTH OGDEN CITY

TAXING UNIT : 27

PREFIX : 07-031

SCALE 1" = 60'

SEE PAGE 22



SEE PAGE 32